

WEEKEND STUDIES (1985)

For guitar

LEX EISENHARDT

I

VI allegro.

mp cresc.

III m i VI IX

mp cresc.

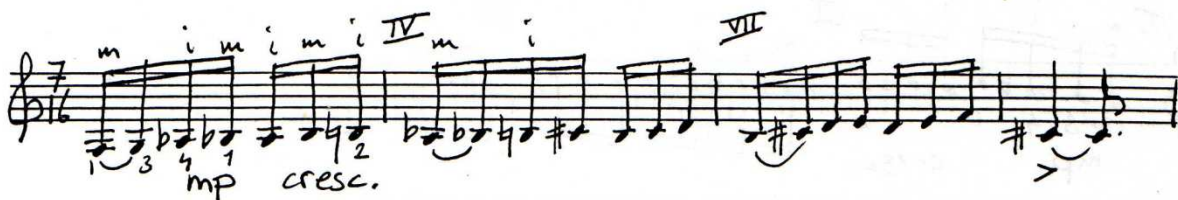
> > > II p p m p p a m i

f Hit the 6th string at the second note sempre forte

p a m i VI p a m i (VI)

p a m i

m i m i IV m II

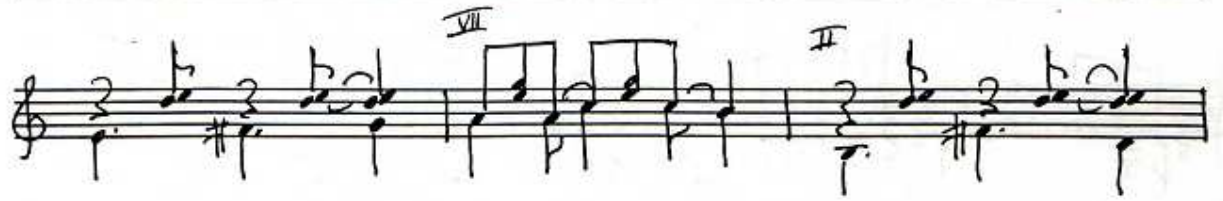






III

Allegro ritmico



II

d a m i
golpe

fine

IX

f

VII

IX

1. VII

2.

D.C. al fine

IV

allegro

Handwritten musical notation for a piano exercise, labeled 'IV' and 'P'. The notation is on a single staff with a treble clef and a 4/8 time signature. It features a sequence of eighth and sixteenth notes with various fingerings and dynamics markings like 'mp' and 'p'.

IP *mp* i m p *m* i m i m i

Handwritten musical score for "L'Espresso" by Giuseppe Verdi. The score is written on a single staff with a treble clef and a 2/8 time signature. It begins with a key signature of one sharp (F#) and a tempo marking "poco rit.". The music features a series of chords and melodic lines, with some parts marked "CI" and "IV". The score ends with a key signature change to two sharps (F# and C#) and a tempo marking "a tempo". The final notes are marked "f" (forte).

Handwritten musical score for 'III p i m a p l i' in treble clef. The score includes various musical notations such as notes, rests, and dynamic markings like 'f', 'pp', and 'sul. pont.'.

Handwritten musical score for 'L'Étude' by Debussy, Op. 10, No. 12. The score is written on a single staff with a treble clef and a key signature of one sharp (F#). The tempo is marked 'modéré'. The score is divided into two systems. The first system contains measures 1 through 8. The second system contains measures 9 through 16. The score includes various musical notations such as notes, rests, and dynamic markings. The dynamics are marked as 'f' (forte), 'pp' (pianissimo), 'mp' (mezzo-piano), and 'p étouffée' (piano, muffled). The score also includes fingerings (1, 2, 3) and articulations (accents, slurs). The piece is in 16/16 time.

Handwritten musical score for 'The Rose Tree'. The score is written on a single staff with a treble clef and a key signature of one sharp (F#). The time signature is 5/8. The music features a melody with eighth and sixteenth notes, often beamed together, and a bass line consisting of chords. The piece is divided into three sections labeled III, II, and I. The first section (III) includes a 'pp' (pianissimo) marking. The second section (II) and third section (I) also contain various musical notations including slurs, accents, and dynamic markings like 'p' and 'f'.

